

## APPENDIX 2 TO THE SAILING INSTRUCTIONS

### Leg 2

#### 7 SCHEDULE OF RACES

The start signal of leg 2 will be on Thursday, August 4th 2022 at 04:00 pm local time off the Horta harbour (1<sup>st</sup> warning signal at 03:52 pm).

#### 9 RACING AREA

The racing area of leg 2 will be between Faial island (Azores) and les sables d'Olonne.

#### 10 START, COURSE AND ARRIVAL

- Starting line and area :

Starting area is in the East of Horta's harbour.

Ends of the starting line will be defined with the staff of the Committee Boat displaying an orange flag on port and the course side of an RED inflatable buoy on starboard

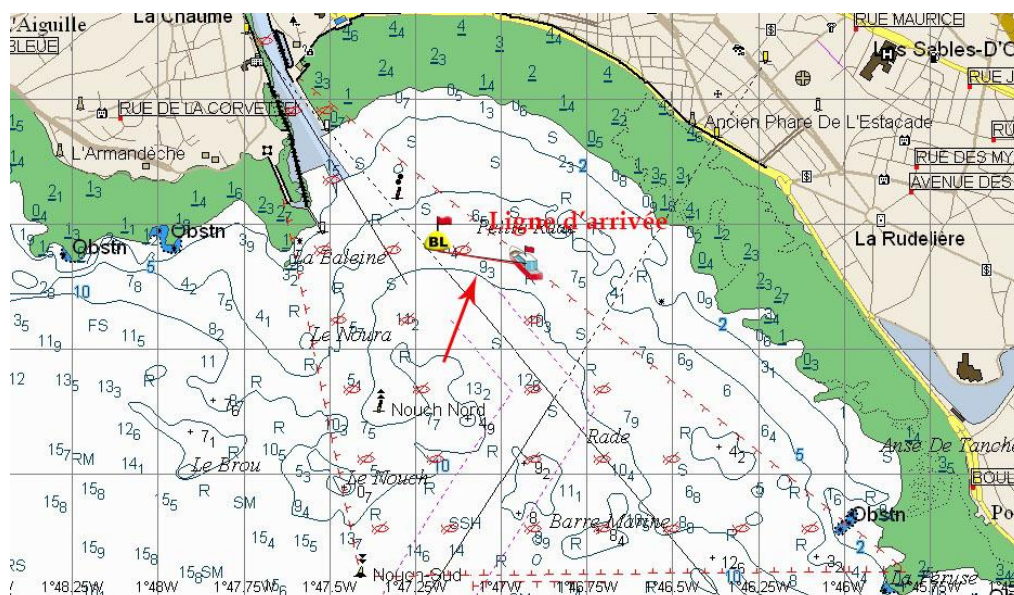
- South Cardinal Buoy « Petites Barges » to be left on port ( $46^{\circ}28,9N-1^{\circ}50,6W$ )
- South Cardinal buoy « Nouch Sud » to be left on port ( $46^{\circ}28,6N-1^{\circ}47,3W$ )
- North cardinal Buoy « Nouch Nord » to be left on port ( $4826.876N-1^{\circ}47.330W$ )

- Finishing line:

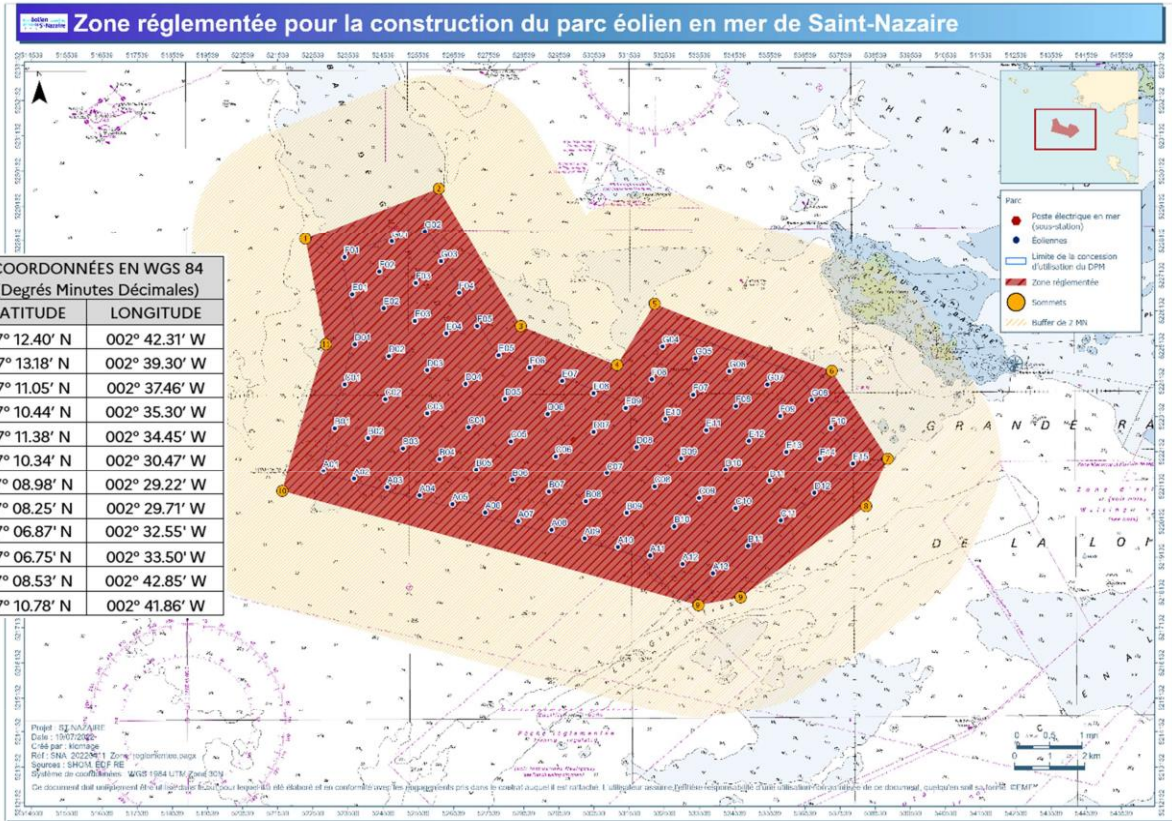
**Article 14.2 definition of the finishing line :**

Finishing line will be between the Committee Boat displaying a BLUE flag to be left on starboard and a YELLOW buoy (pos :  $46^{\circ}29.214N - 01^{\circ}47.195W$  in the SE of « JEAN MARTHE ») to be left on port.

At night, there will be an orange flashlight on the Committee Boat and a strobe light on the buoy.



# Forbidden area



POINT	COORDONNÉES EN WGS 84 (Degrés Minutes Décimales)	
	LATITUDE	LONGITUDE
1	47° 12.40' N	002° 42.31' W
2	47° 13.18' N	002° 39.30' W
3	47° 11.05' N	002° 37.46' W
4	47° 10.44' N	002° 35.30' W
5	47° 11.38' N	002° 34.45' W
6	47° 10.34' N	002° 30.47' W
7	47° 08.98' N	002° 29.22' W
8	47° 08.25' N	002° 29.71' W
9	47° 06.87' N	002° 32.55' W
9'	47° 06.75' N	002° 33.50' W
10	47° 08.53' N	002° 42.85' W
11	47° 10.78' N	002° 41.86' W